



KENT COLLEGE
CANTERBURY

**OPEN TO
THRIVE**



SIXTH FORM

**OPEN TO
THRIVE**



"In the International Baccalaureate (IB), the school has consistently performed significantly above the worldwide average. Pupil attainment at A Level is strong, with almost three-quarters of students results achieving grade B or above."

ISI INSPECTION 2022

WELCOME FROM THE HEAD

Welcome to the Sixth Form which represents the pinnacle of the Kent College experience. Here you will have the chance to explore your favourite subjects in greater depth and develop your intellectual curiosity.

While a strong academic programme is at the heart of Sixth Form there is also a great deal that you can gain to help develop the skills you will need in later life by engaging in our co-curricular programme. We also want you to be happy here, and your wellbeing is really important, so striking a balance across all your commitments is essential.

As Sixth Formers you are also role models for the younger students and we ask you to help us to continue to build the exceptionally caring atmosphere at Kent College. The Sixth Form presents numerous opportunities to take on leadership roles and develop essential skills that you will use in the future.

We really want you to flourish in the Sixth Form so that you can step confidently into the world beyond school, be that at university, other higher education institutions or in the realms of work.

Mr Mark Turnbull
Head
hm@kentcollege.co.uk

THE KC VISION FOR EDUCATION

EDUCATION THAT IS FOCUSED UPON THE NEEDS OF EACH INDIVIDUAL, DEVELOPING INQUIRING AND KNOWLEDGEABLE PEOPLE WHO UNDERSTAND HOW TO LEAD HAPPY AND FULFILLING LIVES, AS COMPASSIONATE MEMBERS OF A GLOBAL COMMUNITY, WITH THE SKILLS TO PLAY ACTIVE ROLES IN AN INCLUSIVE AND SUSTAINABLE FUTURE.



AT KC WE PRACTISE

RESPECT

value oneself, others, and the world around us

ACTING JUSTLY

work for good through service to others

AMBITION

engage positively with all learning opportunities

HUMILITY

walk humbly

OPENNESS

embrace equality, diversity and inclusion

KINDNESS

be considerate and compassionate towards others

RESILIENCE

build the courage to take risks and to forgive others

CURIOSITY

inquiring actively

GREAT LOCATION



Located in the historic city of Canterbury



Easy to get to: 1 hour to London by train



70 mins to Gatwick Airport. 90 mins to Heathrow Airport



Spacious 80 acre campus



New Sixth Form centre

INTERNATIONAL OUTLOOK



40 different nationalities



180 Sixth Form students



SMALL SIZE teaching groups



BESPOKE timetables



School and Community leadership opportunities

SO MUCH TO DO



80 co-curricular activities



Great for sport



Music, drama and dance lessons and productions



School Farm and horse riding lessons



Trips and expeditions

SUPPORTING YOU



HEALTH and wellbeing support



LIFE SKILLS, coaching and visiting speakers

UCAS

One to one UK and international university application support



Careers and Futures programme



Homely boarding

ACADEMIC SUCCESS

IB

Regularly in the top 10 IB schools in the UK for 13 years

37

Average points score since 2017

70%

A* - B 70% average over last 8 years

23

A LEVEL courses

3

CAMBRIDGE TECHNICAL courses



KENT COLLEGE
CANTERBURY
founded in 1885



SIXTH FORM AT A GLANCE

WHAT OUR STUDENTS SAY



Anna - Studying A Levels (English Literature, maths and music)

"I really love the community feel at KC and the teachers cannot do enough to help you. Learning how to develop research skills in the Sixth Form has been a big difference to the way I have tackled my studies."

Going on to read English Literature and Language at University College, University of Oxford



David - Studying A Levels (Maths, Further Maths, Physics, Electronics and EPQ)

"My journey at KC started in Year 9. Settling in was made easy as everyone was so friendly and there was always someone to help you in the boarding house or with your studies."

I have really enjoyed working on my EPQ, Extended Research Project. The independent research leads to the creation of a final report and presentation which has been a valuable experience."

Applying for Electrical and Electronic Engineering in the UK and USA



Francesco - Studying the IB (HL - Italian, Economics, Maths and SL - Business, English Lit, Biology)

"I love the international nature of the school and have made some great friends. I chose the IB as I wanted to continue to study a breadth of subjects and keep my options open for university. You need to be organised to study the IB and focussed with your time. The guidance of the teachers was invaluable"

Francesco doing Business Management at ESCP Business School, Paris



Joseph - Studying Cambridge Technicals (PE, Media and Business Studies and EPQ)

"I started KC in Year 12 and took every opportunity before I started to attend events at the school and meet Heads of Department to help me ensure I was making the right decision. Being keen on sport I know I made the right decision. Settling in was easy as there were lots of new students and everyone was so friendly and welcoming. The support I have received in small groups here has really helped me to grow my confidence and develop my study skills."

Applying for Sports Media and Management courses



Gabriella - Higher level - Business, Economics and English A Standard Level - Biology, Spanish and Maths

I came to KC in Year 12 and was really nervous initially being away from home, but everyone was so welcoming and boarding has become like my second home."

I chose the IB as I did not want to be limited in my subject choices. You are continually encouraged to ask the teachers questions and to challenge and debate ideas. TOK (Theory of Knowledge) has helped me to develop critical thinking and improve my understanding of the things I am learning."

Travelling to Peru to volunteer with Edukid to support the building of schools has been a highlight of my time at KC

Applying for Business management courses



Grace from the UK, studying the IB (SL - English, French, Maths HL - Biology, Chemistry, History)

"Music and drama have been a huge part of my life at KC and I have so many happy memories from all the productions I have been part of."

I chose the IB for the breadth of coursework and I have particularly enjoyed completing the in-depth study for the Extended Essay. "You become a more independent learner in the Sixth Form but the teacher's support and guidance are invaluable." - **teachers' support**

Going on to study Archaeology and Ancient History at Southampton University

EXCITING AND CHALLENGING



CONGRATULATIONS for successfully negotiating your GCSEs. The next two years should be some of the most exciting and challenging of your life.

The Sixth Form will give you the opportunity to:

- › Make new friendships
- › Give you more freedom of choice
- › Enable you to engage your passions
- › Take on leadership roles
- › Try something new
- › Decide on your future

We believe that we give all students the opportunity to thrive and flourish in a learning environment specifically designed to meet their learning needs, with a range of academic choices including the IB Diploma, A Levels and Cambridge Technicals. The Sixth Form enables students to experience smaller tutorial style lessons and make use of timetabled independent study lessons, developing core skills to prepare them for their onward journey either into Higher Education or the workplace. Our diverse and international community is unique, allowing students of all backgrounds and faiths to be nurtured while being intellectually challenged in the classroom. We have a supportive family atmosphere at KC where teachers will always go the extra mile to help you with future decision-making and supporting your progress.

Mrs Ellie Budd, Head of Sixth Form

SIXTH FORM PATHWAY

YEAR 12

Spring term

- › Careers & employability skills
- › Introduction to UCAS
- › Focus on Apprenticeships
- › Global citizenship project presentations

Autumn term

- › Sixth form study skills
- › Start volunteering & duties
- › Decide co-curricular programme
- › Goal setting & values workshops
- › Apply for house leadership responsibilities

Summer term

- › Visit to UCAS fair & university open days
- › Personal statement workshop
- › Plan work experience for the summer
- › Apply for leadership responsibilities - student executive
- › Futures Week

YEAR 13

Autumn term

- › Continue volunteering & duties
- › Develop & lead on co-curricular programme
- › Complete university applications - UK & abroad
- › Finance & Life skills programme

Summer term

- › Study skills for exams
- › Finalise choices for life after school
- › Speech Day & prize giving
- › Prepare for results day & beyond

Spring term

- › Applying to degree apprenticeships
- › Applying for jobs
- › Global citizenship project presentations
- › Leadership responsibilities

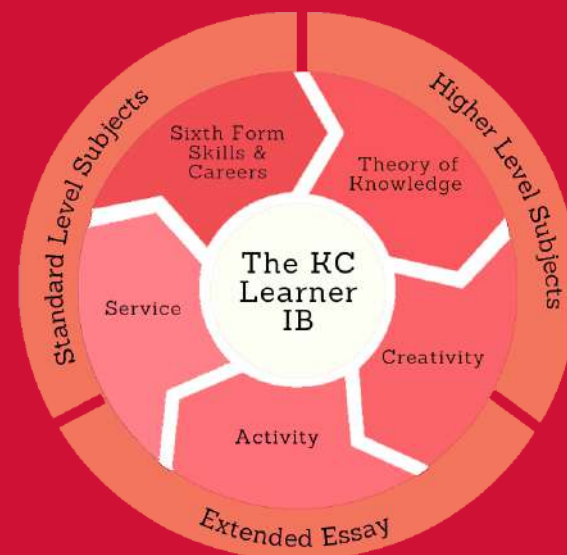
A LEVELS AND CAMBRIDGE TECHNICALS

- › Students specialise in their chosen area of study, avoiding subjects they may have less interest in
- › Most students study three subjects to give them the best chance to gain the highest grades in those subjects which are required for university, some will still study four if they have Further Maths for example and Maths
- › Students have the opportunity to explore subjects of their interest through the EPQ (Extended Project Qualification) programme
- › All students are expected to take part in the co-curricular programme
- › A Levels are marked from A*-U; and Cambridge Technicals are marked from Distinction*-Pass
- › All students are expected to provide service to the community during their time in the Sixth Form



INTERNATIONAL BACCALAUREATE DIPLOMA

- › Students gain a breadth of knowledge across literature, languages, social sciences, sciences, maths and arts
- › All students study six subjects over two years, three at higher level and three at standard level
- › Students complete an Extended Essay, a Theory of Knowledge course (TOK) and the Creativity, Action, and Service programme (CAS)
- › Through the CAS programme, students focus on personal development beyond the classroom during acts of creativity, service and physical activity
- › The IB Diploma is awarded out of a maximum of 45 points, with 7-1 points per subject, and TOK and EE count for 3 points



CHOOSING THE RIGHT COURSE

We know that every student learns in a different way

At Kent College, we know that every student learns in a different way, and we believe that offering these multiple pathways allows each student the opportunity to challenge their individual strengths and abilities in the way that suits them best.

- › Kent College is a leading provider of the IB Diploma Programme, consistently placed in the top 10 IB small IB schools in the UK.
- › We also offer A Level and Cambridge Technical Diploma courses.
- › With this broad range of courses on offer we are able to ensure students follow the most appropriate combination of subjects given their interests and abilities.
- › We are passionate that every student receives the education that is right for them, and our dedicated team of teachers ensures our students not only achieve excellent results, but that while doing so, they foster a lifelong love of learning.

How to choose?

- › All the pathways offer challenging, highly-regarded qualifications which are accepted as university entrance qualifications worldwide.
- › The IB and A Level programmes of study are two-year courses, with external exams at the end of the two years.
- › The Cambridge Technical Diplomas are a combination of portfolios of work with less emphasis on final examinations.
- › The choice of which programme to study will rely largely on a student's academic interests, personal learning style, and plans for university and beyond.
- › Bespoke, individual timetables accommodate the subjects or combinations of subjects students wish to study, ensuring each student is able to pursue their interests.
- › Here to help and guide you. Our experienced team will guide you to select the right courses and subjects for you and your future plans



WHY STUDY THE IB?

The IB Diploma is an exciting programme that focuses not only on the academic enrichment of the student, but their personal development as a well-rounded individual. It is highly-respected internationally and recognised by all UK universities. The Diploma offers a breadth of knowledge and range of skills that are sought-after by employers and higher education alike.

- › The IB Diploma allows students to follow six subjects from different areas of study.
- › Students also research and write an Extended Essay in an area of interest to them; this is highly regarded by universities.
- › They complement their academic study with a course on the Theory of Knowledge, as well as gaining credit for their co-curricular activities in Creativity, Action and Service.

The Diploma is a challenging course that will suit students who are hard working, well organised and have a genuine curiosity for the subjects of their study.

Since 2017, our students have consistently achieved an average of 37 points placing Kent College in the top 10 UK schools offering the IB.

"The diploma was the perfect course for me. I love the breadth it allowed me to maintain while still being able to delve deep into my particular fields of interest."
- KC Student

Block	Subjects
Literature	English, Italian, German
Language Acquisition (1)	English (1), Spanish (1), French (1), German (1)
Humanities	History, Geography, Business Management, Economics
Sciences	Physics, Biology, Chemistry
Maths	Analysis and Approaches (AA), Applications and Interpretations (AI) including vectors course
Arts	Art, Music

(1) language may be studied at three levels: Ab initio, where students learn a language from scratch, Standard Level and Higher Level.

ELEMENTS OF THE IB DIPLOMA

CREATIVITY, ACTION, SERVICE (CAS)

Creativity, Action, Service (CAS) focuses on personal development outside the classroom. The student engages in Creativity, through the arts and creative thinking; Action, through physical activity, contributing to a healthy lifestyle; and Service, volunteering to benefit others. A personal journey of self-discovery, CAS is a challenging endeavour in personal growth.

EXTENDED ESSAY

The Extended Essay is an in-depth study on a topic of the student's choosing. It is the perfect opportunity to show knowledge, understanding, and enthusiasm for the student's academic interests through high-level research and intellectual discovery.



THEORY OF KNOWLEDGE

The Theory of Knowledge focuses on critical thinking, challenging the notion of learning as the mere acquisition of facts. The complexities associated with knowledge are closely considered; we look at what we believe to be true, the reasons we have for holding these beliefs and whether or not our reasons for holding them are 'good'. The aim is not only to introduce students to a range of ideas and debates, but to encourage them to view their own ideas, beliefs and opinions in light of those of others.

A LEVELS AND CAMBRIDGE TECHNICALS EXPLAINED



Kent College offers a wide variety of Sixth Form qualifications, allowing students to specialise in the subjects they are passionate about. We are certified as a top 50 UK independent school for the percentage of pupils achieving A*- B grades at A Level.

We pride ourselves on the quality of our teaching. Students are engaged in their learning, and our small class sizes allow for increased individual attention, helping students to achieve their best. Teachers' expectations of pupils are high and are aware of the need to support those who may find Sixth Form work more challenging. Students are encouraged to work independently, but staff are

always happy to offer one-to-one support in order to help students succeed.

We also offer Cambridge Technical courses, providing a valuable alternative to students whose learning style may be more suited to coursework projects in addition to formal written examinations. We offer these in Business Studies, Sports and Physical Activity and Media. They are widely accepted by universities and colleges as well as providing entry to other professional qualifications or employment. The grading system is equivalent to A Level grades and the UCAS points system.

EXTENDED PROJECT QUALIFICATION

The Extended Project Qualification (EPQ) is an AS Level equivalent stand-alone qualification designed to extend and develop students' abilities beyond the syllabus and prepare for higher level study. It is fully recognised by universities and employers and offers UCAS points.

The EPQ allows students to research their own projects. Students are able to plan and carry out research on a topic that they have chosen and isn't covered by their other qualifications. They can take inspiration from something touched on in

class or something related to a personal interest. They then use this research to produce a written report.

As part of the assessment, students will need to show their research log throughout the project, write a final report and present it to staff. They will be allocated a member of staff as their supervisor to help guide them through the process, yet the emphasis remains on it being an independent research project.

A WIDE SELECTION OF COURSES

- ART
- BIOLOGY
- BUSINESS
(ALEVEL AND CAMBRIDGE TECHNICAL)
- CHEMISTRY
- COMPUTER SCIENCE
- DESIGN AND TECHNOLOGY
- DRAMA AND THEATRE STUDIES
- ECONOMICS
- ENGLISH LITERATURE
- FRENCH
- GEOGRAPHY
- HISTORY
- GERMAN
- MATHS
- FURTHER MATHEMATICS
- MEDIA (CAMBRIDGE TECHNICAL)
- MUSIC
- PHILOSOPHY OF RELIGION AND RELIGIOUS ETHICS
- PHYSICS
- POLITICS
- PSYCHOLOGY
- SPANISH
- SPORT AND PHYSICAL ACTIVITY
(CAMBRIDGE TECHNICAL)

LIFE IN THE SIXTH FORM

We encourage and support students to develop themselves, through a culture of independence, ambition and personal development, ready to achieve their goals in the wider-post school world

Wellbeing & Sport

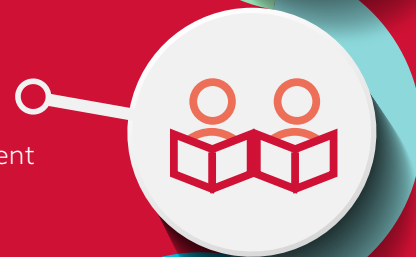
- › Sports for everyone - from beginner to elite
- › Duke of Edinburgh
- › Wellbeing focused groups
- › Dedicated pastoral support team

Careers and Futures

- › Pathways to Futures
- › Insights Programme
- › Sixth Form Skills sessions
- › Futures Week
- › Transferable Skills Development

Service & Community

- › Duties & responsibilities
- › Leadership within the school as house captains or prefects
- › Volunteering opportunities such as working in local primary schools, conservation in Blean Woods
- › Working as student mentors



Culture, Language, Arts & Music

- › Music & Drama qualifications
- › A wide range of trips and activities, Model UN, public speaking, debating
- › Young Enterprise
- › Celebration of different cultures

Global Citizenship

- › Global Citizens project in Sixth Form Skills
- › Volunteering project in Peru
- › Trips abroad: Geography to Iceland, ski trip to Austria, DofE in Slovenia and Art, History & Business to New York

SUPPORT YOUR AMBITIONS, DEVELOP YOUR CURIOSITY, BUILD YOUR SKILLS

STUDENTS HAVE MORE THAN 80 WEEKLY ACTIVITIES TO TRY FROM ARCHERY TO ZUMBA DANCING



LEADERSHIP & OUTREACH IN THE COMMUNITY

Sixth Form students play a vital role the fabric of the school and have many opportunities to serve as ambassadors and leaders. Sixth formers may be nominated to be our Heads of School, House Captains and Prefects, providing leadership and community support to their fellow students.

They serve as role models to younger students in their Boarding Houses and take on leadership roles in activities, clubs and societies.

OUTREACH IN THE COMMUNITY

Our students understand their responsibility to give back to the community and are eager to begin making their impact on the world. Our active Charity Committee arranges events throughout the year to raise funds for multiple charities such as MIND, CALM and Ambitious about Autism.

Students find an array of ways to get involved locally from protecting the environment to supporting local primary schools with sport, maths, science and reading lessons.

HERE FOR YOU



Wellbeing is at the heart of what we do and is central to our ethos as a Methodist school. Kent College is well known for our family atmosphere and supportive environment, and we know it is vital that our students strike a balance between study and free time, whether through sport, music or helping out on the farm.

Guidance and support are available whenever a student may need them, and while all members of staff are more than happy to help with any concerns, every student is supported by their personal tutor who they meet with daily and their Head of Year who ensures a

smooth transition into Sixth Form and guides on university applications and future planning, while also supporting them through their entire tenure at Kent College.

The pastoral house system at Kent College is designed to impart a real sense of belonging, instilling friendly competition and forming lifelong bonds. Three times a week, students meet for chapel, with one service being dedicated to upper school students, this is where achievements are celebrated and reflected upon, and our Chaplain is always available to be a listening ear.

PREPARING FOR YOUR FUTURE

THE FUTURES AND INSIGHT PROGRAMME SUPPORTS EACH STUDENT TO FIND THE RIGHT ROUTE FOR THEM

Study Insights

Talks from academic institutions to allow students to hear from universities in the UK and internationally about the step up to further education and what their institutions offer.

Careers pathways

Dedicated careers support within school and one-to-one support with university applications, as well as careers tutorials and support from tutors throughout sixth form.

Transferable Skills Development

Classroom support sessions cover study skills and students are guided to develop their transferable skills for the future, including leadership, communication, teamwork and much more.

Careers Insights

Seminars from local professionals, friends of the school and alumni to hear from a range of different perspectives.

Futures Week

Students have the chance to attend a Careers Fair in the Great Hall with visiting universities, workshops and speakers. They can visit universities, attend preparation sessions for their UCAS applications and develop their future plans with the Careers team.

Workplace Insights

All students are supported to arrange work experience and courses as part of their career development

CAREERS & FUTURES

Increasingly young people will be cultivating multiple careers throughout their working life and they need to be prepared for a dynamic and exciting future. We know that the future is rapidly changing, and the careers our students will have may not yet exist, this is why we are so passionate about delivering an individualised education to each of our students. Our dedicated Careers Advisor together with our Head of Sixth Form and Head of Year will guide and advise students on their career pathway choices.



AEROSPACE ENGINEER
AI SPECIALIST
BIOCHEMIST
ARCHITECT
CONDUCTOR
CEO
CURATOR
DIGITAL MARKETEER
CYBERSECURITY ANALYST
ECONOMIST
ELECTRICAL ENGINEER
GAMES DESIGNER
ENTREPRENEUR
ENVIRONMENTAL CAMPAIGNER
ILLUSTRATOR
FILM PRODUCER
INTERIOR DESIGNER
LAWYER
MARINE BIOLOGIST
PHYSIOTHERAPIST
PHARMACIST
RESEARCHER
PSYCHOLOGIST
STAGE MANAGER
RENEWABLE ENERGY TECHNICIAN
SPORTS SCIENTIST
SURGEON
URBAN PLANNER
THEORETICAL PHYSICIST
VET
VIRTUAL REALITY ARCHITECT

LIFE AFTER KC

Deciding what to study and where to attend university may at first seem daunting, but our students need not feel alone! Support is provided along the journey. The Head of Sixth Form and Careers Advisor guides students through the university application process. They are encouraged to examine their strengths and interests and advised on possible career paths, choosing the right university course and writing their personal statement.

Unifrog: supporting progression

Students also have access to the online Unifrog platform, where they can explore UCAS, as well as universities in the USA, Europe, Asia and Australia, alongside the many apprenticeships on offer. Students can use Unifrog to research specific careers, from astronaut to zoologist, as well as those based on their general interests, like art or technology.

Exploring opportunities

Further inspiration and information may be gained through a variety of other opportunities, including relevant summer schools and subject-specific days, as well as university, career and apprenticeship fairs. Kent College hosts visiting lecturers who discuss pursuing specific careers, such as medicine, law and veterinary science, alongside an array of relevant topics, including: gap year opportunities, USA scholarships, and a personal statement writing workshop.

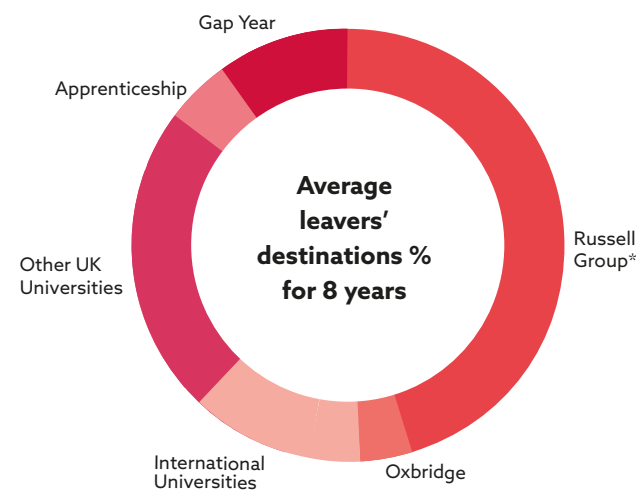
Applying for Oxbridge

For students aiming for Oxford or Cambridge, we plan visits to the universities, meeting admissions teams, tutors and Kent College alumni, and individual support is provided during the application process.

Destinations

Destinations for our leavers include many top universities in the UK and further afield; over 45% of our students regularly attend Russell Group universities, and international destinations have included Bocconi in Milan, Esade in Barcelona and the Cornell University USA. Our students are encouraged to consider the pathway that suits them best, whether that be direct entrance into university, a gap year spent working or exploring, or an apprenticeship in their desired field. Kent College aims to ensure that every student sets off on the path to the future that is right for them.

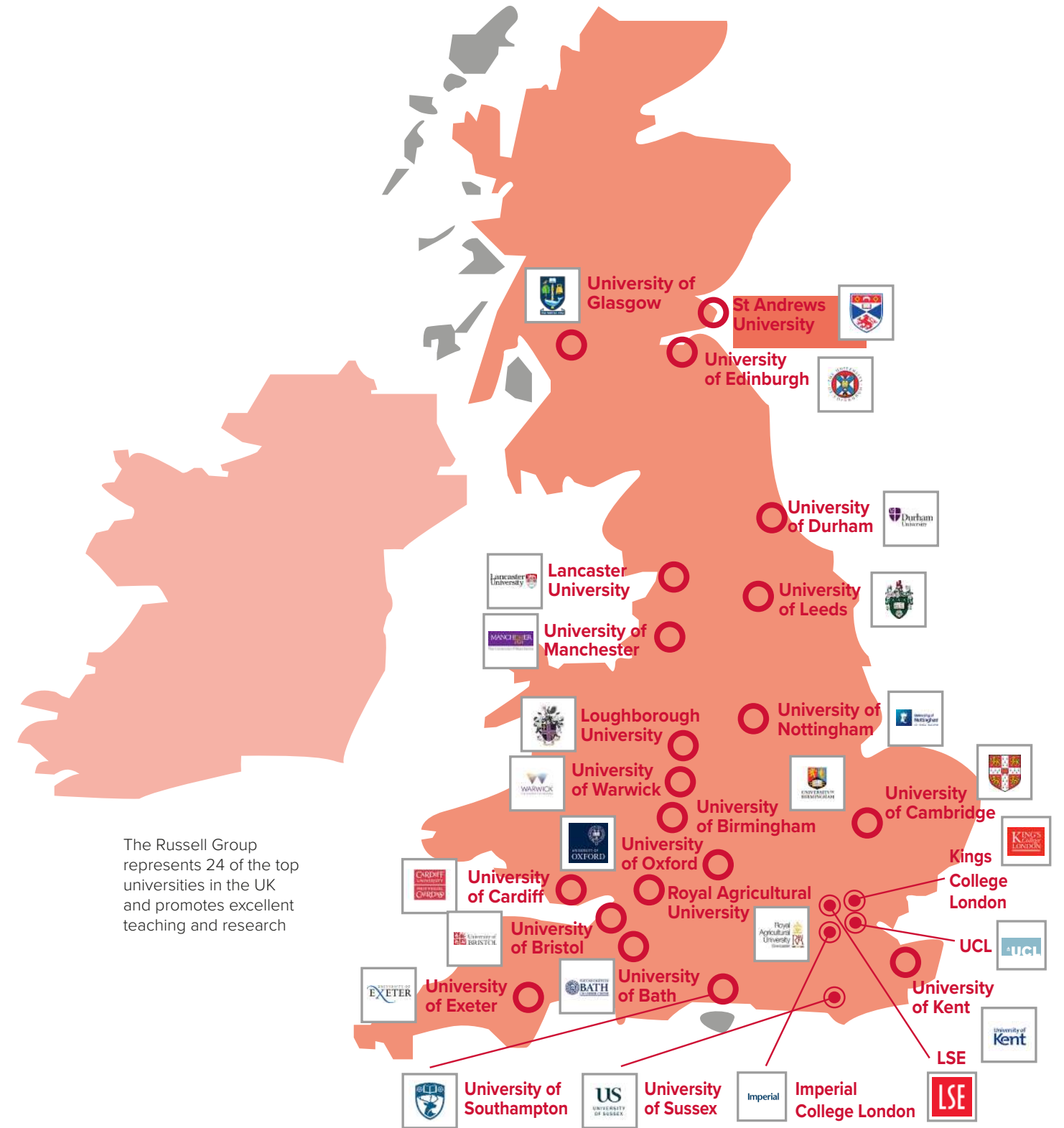
8 year average university destinations



The Russell Group represents 24 of the UK top universities and promotes excellent teaching and research

UNIVERSITY DESTINATIONS

ANNUAL UK UNIVERSITY DESTINATIONS



SIXTH FORM BOARDING

The Boarding community operates as an extended family with House Parents in each Boarding House ensuring that each child is happy during their time at Kent College.

They are also supported by Assistant House Parents, Tutors and House Managers who provide 24-hour care for the students ensuring that they have assistance with prep, as well as any practical matters, and are always ready to listen to any concerns our boarders may have. As the school does not have exeat weekends, and is comprised almost entirely of full-time boarders, the weekends are always very lively on campus with sports activities, visits to Canterbury in the afternoon and movie nights.

There is a wide variety of trips for boarders throughout the year from ice skating at the Natural History Museum to paintballing or theatre trips. There is also a very popular brunch option available at weekends enabling students to have a relaxed social gathering over a meal in the morning. Sixth Form students take on additional responsibility in the Boarding Houses as Head of House and Assistant Head of House, welcoming new students and helping them to settle in. Year 12 and Year 13 students are encouraged to grow their independence during their last two years at school in preparation for university and can take cooking classes alongside learning how to manage day-to-day household requirements.



COME AND VISIT US

School office opening times

Term-time: Mondays to Fridays – 08:00 to 18:15

Saturdays – 09:00 to 12:00

Holidays: Mondays to Fridays – 08:00 to 14:00

+44 (0)1227 763231 enquiries@kentcollege.co.uk

Head

Mr Mark Turnbull +44 (0)1227 813902

hm@kentcollege.co.uk

Deputy Head, Learning:

Mr Graham Letley +44 (0)1227 813930

deputyhead@kentcollege.co.uk

Head of Sixth Form

Mrs Ellie Budd

ebudd@kentcollege.co.uk

Head of Admissions

Mrs Karen Simpson +44 (0)1227 813906

admissions@kentcollege.co.uk

Head of International Admissions

Mr James Stevenson

admissions@kentcollege.co.uk

Admissions opening times:

Mondays to Fridays – 08:30 to 17:00

Further contact information can be found on the staff page on the school website kentcollege.com



KENT COLLEGE
CANTERBURY

Kent College
Whitstable Road
Canterbury
CT2 9DT

admissions@kentcollege.co.uk
01227 813906

kentcollege.com

